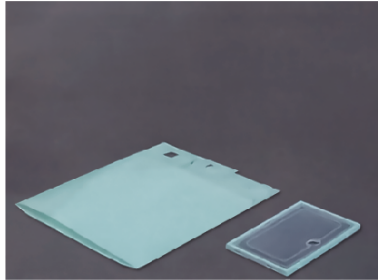


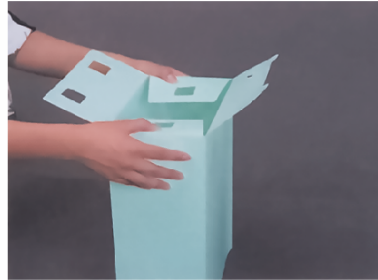
# Folding Shoe Box User Manual



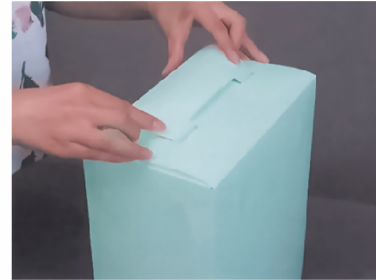
1. Open the package and take out the parts of the shoe box then start assembling.



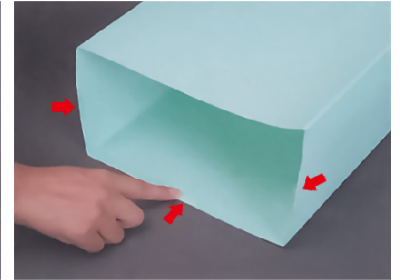
2. Folding the shoe boxes (As shown)



3. Bending the bottom of the box and peel off excess parts then snap the buckle into the hole.



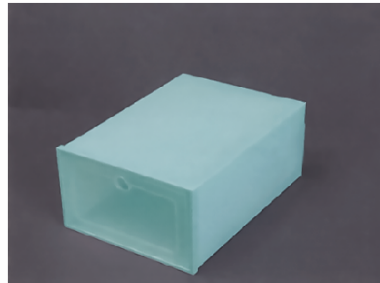
4. Snapping the buckle into the hole as shown.



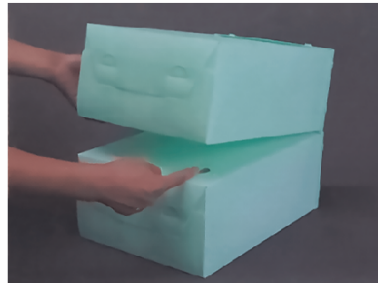
5. Folding the three tabs into the box as shown.



6. Taking out the box frame and snapping the frame into the shoe boxes



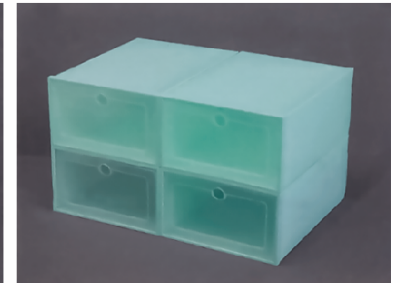
7. The installation is complete!



8. Installing two boxes, please insert the boxes into the buckle as picture shown.



9. The same layer of shoe box connection, fixing the box frame edge and lock the boxes.



10. The combination is completed, Follow the above steps to connect to a shoe cabinet.

Of course, we also have videos. the installation video is in the listing

Although the transaction is over, the service has just begun

If you are satisfied, please let others know. ★★★★★

If you are not satisfied, please let us know. Looking forward to your next visit!